

EC731

Cascade boilers

Release 4

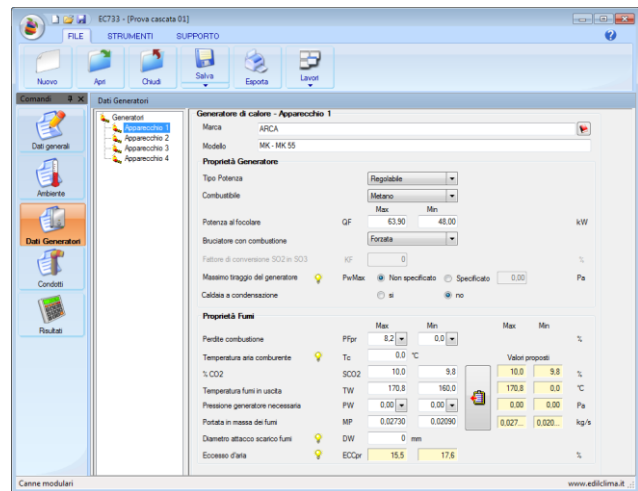
EC731 Cascade boilers is an extension module for EC 733 Single chimney base module. It works only if EC 733 Single chimney base module is already installed.

EC731 module complies with EN 13384-2 standard. It allows to design and check the correct sizing of a single chimney serving a series of cascade boilers (either standard or condensing) or a series of combustion engines.

Features

The software calculates a single chimney serving a cascade of boilers (or combustion engines) according to EN 13384-2 standard and supports:

- boilers with nominal power from 1 to 1.000.000 di kW;
- boilers using liquid, solid and gaseous fuels;
- atmospheric boilers (without fan), forced draught (with flue extraction fan) and pressurized boilers (with combustion air fan);
- terminal chimney segment with different properties than those of the chimney;
- circular, squared, rectangular and elliptical chimneys, collector segment and connecting flue pipes;
- calculation of the air supply pressure resistance;
- calculation of the thermal resistance of chimney walls;
- design and check of both negative and positive pressure chimneys;
- detailed report of calculation results;
- simultaneous calculation with an array of sizes for the chimney, the collector segments and the connecting flue pipes.



Reports

The software produces an RTF file report that includes calculation details (input data, final results and significant intermediate results) and compliance check details. The user can complete and customize the report before final printing.

Archives

The software module includes the following archives:

- **Companies** archive;
- **Generators** archive (organized as default Edilclima archive and User archive, common to all Edilclima software);
- **Flue connections** and **chimneys** archive, where the user can save properties of any custom duct or chimney;
- **Italian municipalities** archive, where the user can find elevation and design external temperature data.