

EC731

Cascade Installations

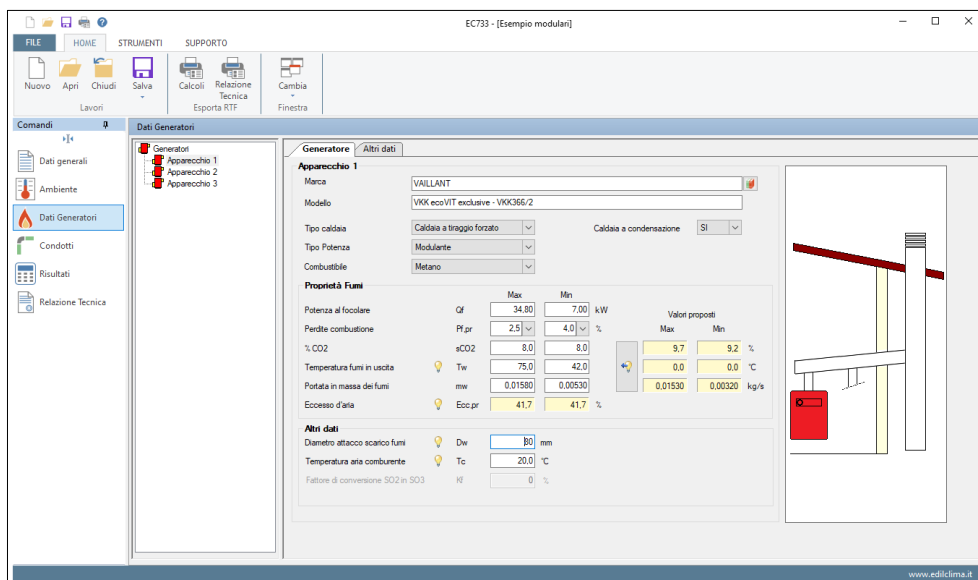
The **EC731-Cascade Installations** module, works only in conjunction with the software EC733-Single Chimneys.

The EC731 module, which complies with the UNI EN 13384-2 standard, makes it possible to design and verify the correct construction of a single chimney served by a series of heat generators (or kitchen hoods) arranged in cascade.

Characteristics

The module performs the calculation of single chimneys dimensioning according to the methods of the UNI EN 13384-2 standard and allows to manage:

- appliances with powers between 1 and 1.000.000 kW;
- appliances with liquid, solid and gaseous fuels;
- appliances with atmospheric, pressurised or forced functioning;
- kitchen hood functioning both in negative and positive pressure;
- possible presence of a fume extractor on the chimney or a fan placed on the last section of the flue-gas collector;
- presence of chimney pot with different thermal characteristics from the rest of the chimney;
- flue-gas conduit (and flue pipes) of circular, square, rectangular or elliptical shape;
- calculation of combustion air resistance;
- calculation of ducts thermal resistance;
- sizing of negative and positive pressure ducts;
- detailed display of main calculation results;
- possibility of performing the calculation by evaluating several duct sizes simultaneously;
- possibility of producing an outline technical report of the system.



Prints

The calculation results are exported in .RTF format, so that they can be edited by the user, who can then make additions and/or customisations to the documents before proceeding to the final printout.

If completed it is also possible to export, also in .RTF format, the previously compiled outline technical report.

Archives

The program incorporates the following archives:

- **Companies** archive
- **Generators** archive (divided into Edilclima and user and common to all Edilclima software)
- **Flue-pipes** archive and **Chimneys** archive, where the user can save conformations and specific data of every duct
- **Italian Municipalities** archive, from where the user can automatically acquire altitude and outside project temperature