

# EC732

## Collective chimneys

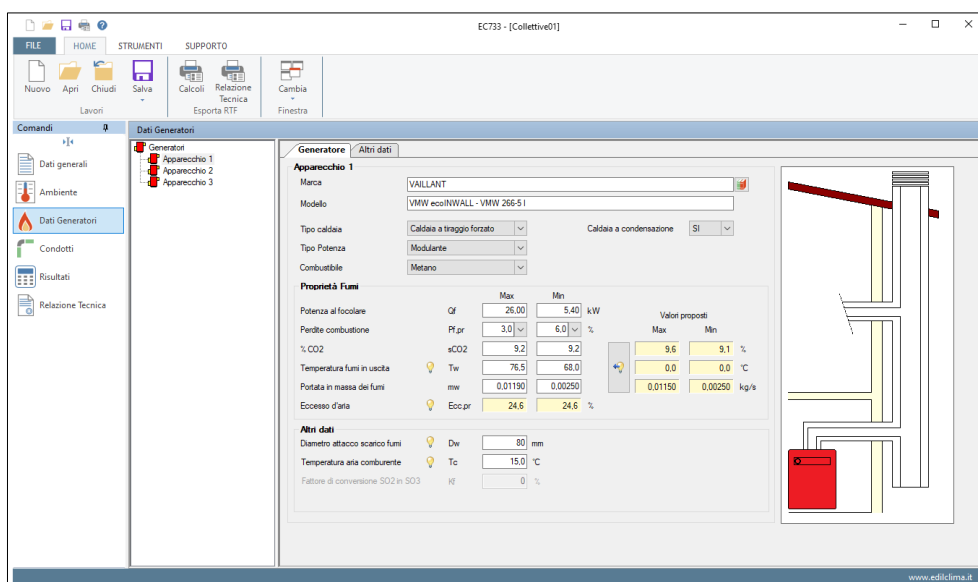
The module **EC732 Collective chimneys**, only works in conjunction with the software EC733 Single chimneys.

The EC732 module makes it possible to design and verify the correct realisation of a chimney serviced by several heat generators (or kitchen hoods) placed on several floors, both in accordance with the UNI EN 13384-2 standard and with the UNI 10640 and UNI 10641 standards.

### Characteristics

The module performs the dimensioning calculation of collective chimneys, according to the methods of the UNI EN 13384-2 and UNI 10641, the branch ducts according to the methods of the UNI10640 standard and allows the management of:

- appliances with powers between 1 and 1.000.000 kW;
- appliances with liquid, solid and gaseous fuels;
- appliances with atmospheric, pressurised or forced functioning;
- kitchen hood functioning both in negative and positive pressure;
- possible presence of a fume extractor on the chimney pot;
- presence of a chimney pot with different thermal characteristics from the rest of the chimney;
- simple or concentric flue-gas conduit (and flue pipes);
- flue-gas conduit (and flue-pipes) of circular, square, rectangular or elliptical shape;
- collective chimneys and branched collective pipes (Shunt type);
- calculation of combustion air resistance;
- calculation of ducts thermal resistance;
- sizing of negative and positive pressure ducts;
- detailed display of main calculation results;
- possibility of performing the calculation by evaluating several duct sizes simultaneously;
- possibility of producing an outline technical report of the system.



### Prints

The calculation results are exported in .RTF format, so that they can be edited by the user, who can then make additions and/or customisations to the documents before proceeding to the final printout.

If completed, it is also possible to export, also in .RTF format, the previously compiled outline technical report.

## Archives

The following archives complement the program:

- **Companies** archive
- **Generators** archive (divided into Edilclima and user and common to all Edilclima software)
- **Flue-pipes** archive and **Chimney** archive, where the user can save conformations and specific data of every duct
- **Italian Municipalities** archive, from where the user can automatically acquire altitude and outside project temperature