

EC733

Single chimney

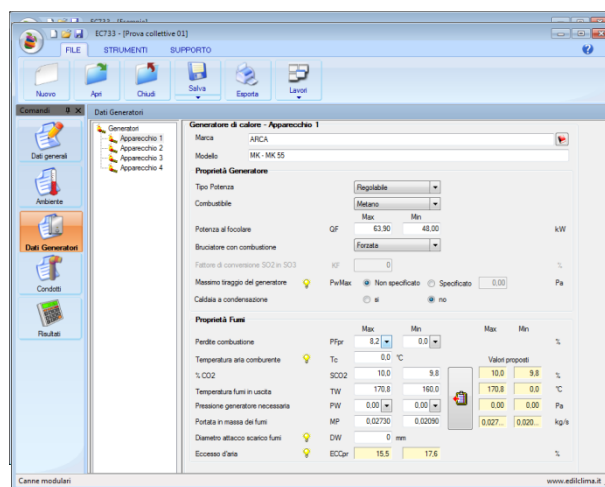
Release 4

EC 733 software module allows to design and to check the correct sizing of a single chimney according to EN 13384-1 standard. The chimney can be calculated in connection with a boiler (either standard or condensing), a fireplace or a combustion engine.

Features

The software calculates a single chimney according to EN 13384-1 and supports:

- boilers with a nominal power from 1 to 1.000.000 kW;
- boilers using liquid, solid and gaseous fuels;
- atmospheric boilers (without fan), forced draught (with flue extraction fan) and pressurized boilers (with combustion air fan);
- draught regulators;
- terminal chimney segment with different properties than those of the main chimney;
- coaxial chimneys and connecting flue pipes;
- circular, squared, rectangular and elliptical chimneys and connecting flue pipes;
- calculation of the air supply pressure resistance;
- calculation of the thermal resistance of chimney walls;
- design and check of both negative and positive pressure chimneys;
- detailed report of calculation results;
- simultaneous calculation with an array of sizes for the chimney and the connecting flue pipes.



Reports

The software produces an RTF file report that includes calculation details (input data, final results and significant intermediate results) and compliance check details. The user can complete and customize the report before final printing.

Archives

The software module includes the following archives:

- **Companies** archive;
- **Generators** archive (organized as default Edilclima archive and User archive, common to all Edilclima software);
- **Flue connections** and **chimneys** archive, where the user can save properties of any custom duct or chimney;
- **Italian municipalities** archive, where the user can find elevation and design external temperature data.